

- **Reliable hydraulic system**
- **Excellent fuel economy**
- **Ease of operation**

Meets EPA Tier 2

- **Rated Power** **129kW(173hp)**
- **Operating Weight** **14100kg**



Base operating weight(standard equipment)

Includes all operating fluids and operator

Total	14100kg
On front wheels	3700kg
On rear wheels	10400kg

Weight adjustments for various options are listed

Working capacity(standard equipment)

Maximum draw pull	74.4kN
Cutting pressure	8800kg

Engine	Cummins QSB5.9-C173
Rated power	129kW(173hp)@2200rpm
Peak torque	800Nm@1500rpm
Torque rise	42.6%
Cylinders-bore x stroke	6-102 x120mm
Displacement	5.9L

Transmission ZF 6WG200

Type: counter shaft-type power shift, semi-automatic electrical hydraulic shifting control

Converter: single-stage , single-phase, three elements torque converter

Travel Speeds(km/h)						
	Gear1	Gear2	Gear3	Gear4	Gear5	Gear6
Forward	0~6.0	0~10.4	0~12.4	0~21	0~26.2	0~42.8
Reverse	0~6.0	0~12.4	0~26.2			

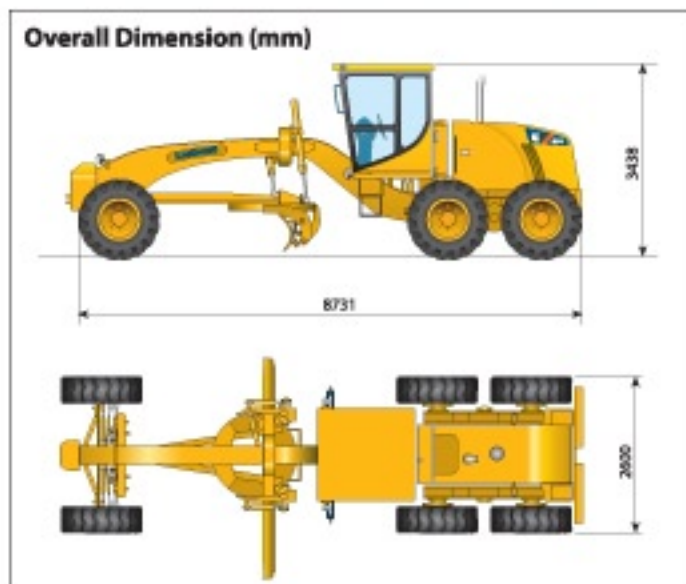
Differential & final drive

Self-locking unlocking 'No-Spin' differential; The rear axle shell is hardened and is designed all-float.

Brakes

Service: Full hydraulic shoe brake, operating by foot.

Parking: Electromagnetic control, hydraulic release ,disc type


Tandem drive

Height	552 mm
Width	210 mm
Thickness	inner wall: 20mm outer wall: 20mm
Center distance	1553mm
Oscillating angle	±15°
Tires	17.5-25

Front axle All welded steel-frame structure

Wheel Lean angle	Left./right 17°
Oscillating	up/down 15°
Ground clearance	654mm

Steering Hydrostatic power front wheel steering system

Min. turning radius	8234mm
Steering angle	±45°
Frame articulation angle	20°

Hydraulics

Working pump	Variable displacement piston pump
Max. pressure	21MPa
Output	151.8L@2200r/min

Circle

Diameter	1230 mm
Thickness	90 mm

Articulated structure

Two hydraulic cylinders actuate frame to articulate 20° left or right

Moldboard

Length	3960mm
Height (chord)	650mm

Blade lift range

Blade slide	right: 725mm left: 675mm
Max. sloping angle	90°
Blade ground clearance	450mm
Blade cutting depth	555mm
Blade tilt range	40°~70°

Capacities

Fuel tank	270L
Hydraulic tank	100L
Transmission	45L
Crankcase	22L

Equipment
● Standard
▲ Optional

- | | |
|-------------------------------------|---------------------------|
| ● CumminsQSB5.9-173 | ● ZF6WG200 transmission |
| ● Rockwell ' No. Spin' differential | ● Air conditioner |
| ● Rops & Fops cab | ● 17.5-2.5PR14(G-2) tires |
| ▲ Rear Ripper | ▲ Dozer |